

Speeds

Hoisting speeds at full load

Hoisting machinery type	Number of hoisting-rope falls	Hoisting speeds in ft/min			
		Operating position			High-speed lowering
		1	2	3	
125 S 8	2	28	56	394	536 *)
	4	14	28	197	268

*) Greatest load with 2 hoisting-rope falls 900 lb

Slewing speed 0 - 1.2 r/m
 Trolley-traversing speed 180 ft/min
 Crane-travelling speed 160 ft/min

Motors

Crane with hoisting machinery type	Output in h.p.				
	Hoisting motors			Slewing motor +)	Trolley-traversing motor
	Main motor	Creep motor	High-speed lowering motor		
125 S 8	135	19/10	20	2 x 6.6	6.6

+) Available torque on starting the slewing machinery 79 000 lbf·ft

Electrical net connection

440 V, 3 phase, 60 c/s. Equipment for connection to other voltages is supplied on request.

The net voltage must not drop below 90 % of its nominal value when the greatest power load of the crane is utilized. Greatest permitted overvoltage 10 %.

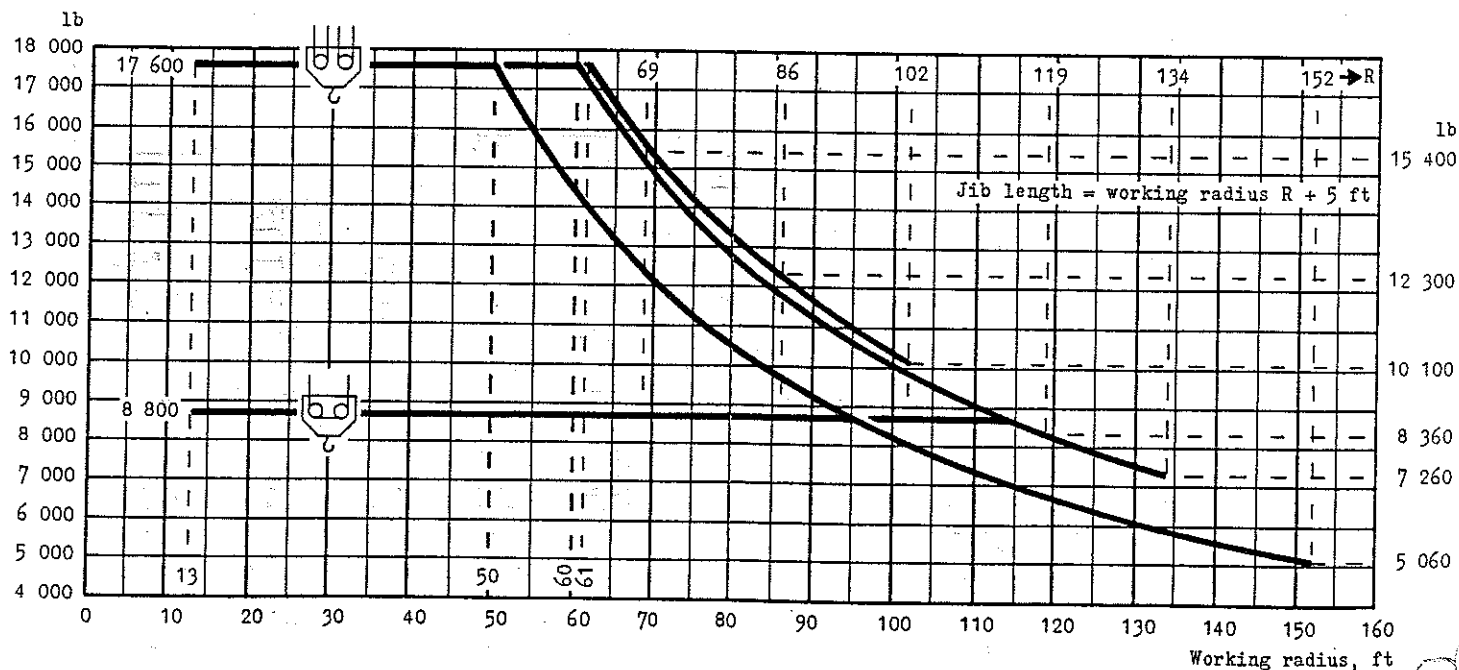
Crane with hoisting machinery type	Greatest power load kVA	Connecting cable with 4 conductors Area of each conductor		
		Apparatus cubicle to mast foot	Mast foot to net or transformer up to 300 ft cable length	remaining length
125 S 8	140	AWG 1/0	AWG 1/0	AWG 2/0

Counterweight

The counterweight consists of 2 200 lb concrete weights. See the chapter "Preparations", page 2.1, in the crane manual for their dimensions and reinforcements.

Crane with hoisting machinery type	Weight of counterweight in lb					
	Working radius of the crane in ft					
	69	86	102	119	134	152
125 S 8	8 800	11 000	13 200	17 600	19 800	19 800

Recommended working capacity



This data sheet applies to cranes with type designations L5101 and cranes with type designations L 130 and series numbers from 26-70 to 26-153.

We reserve, however, the right to change data and dimensions without notice.

LINDEN-ALIMAK AB

Box 722
 S-721 20 Västerås
 Sweden

Telephone 021-13 72 20
 Telex 40603
 Cable LINDALI